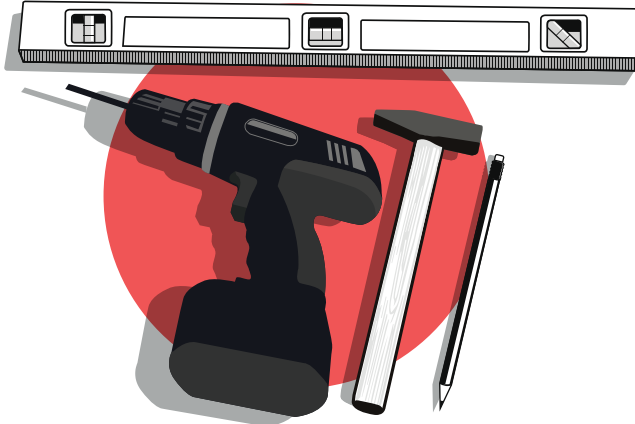


Acrylic Art

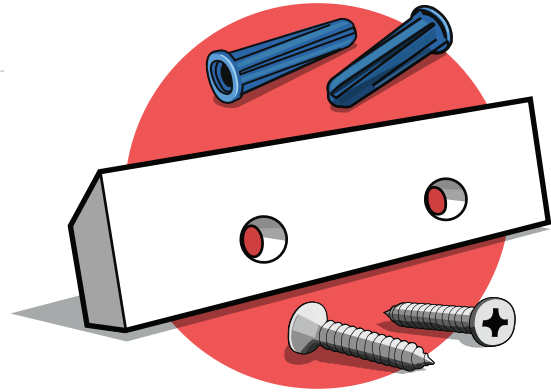
Hanging Instructions

Recommended Tools



Drill / Hammer / Level / Pencil / **3/16" Drill Bit**

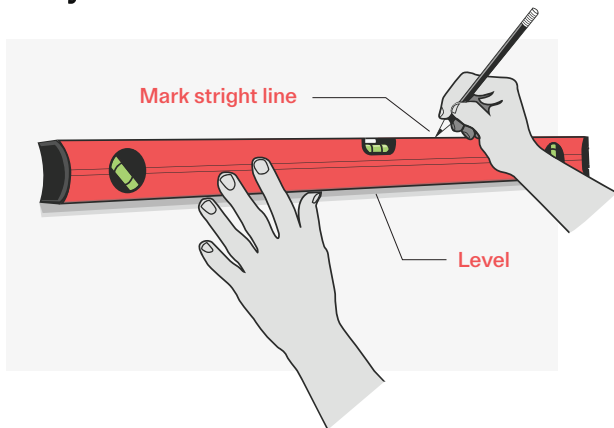
Hardware Supplied



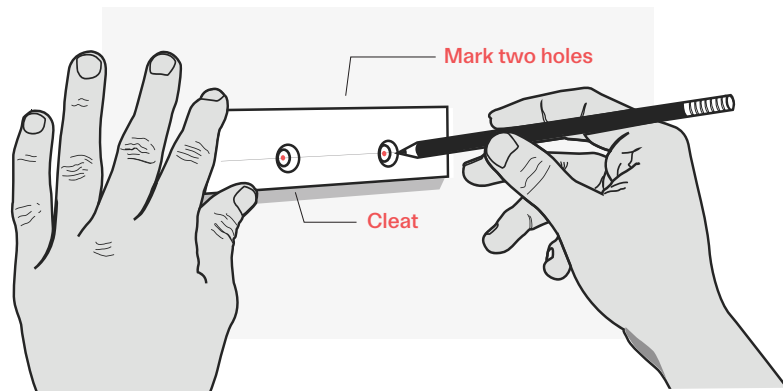
Cleat / Screws / Blue Anchor

Drywall Surface Instructions as Follows

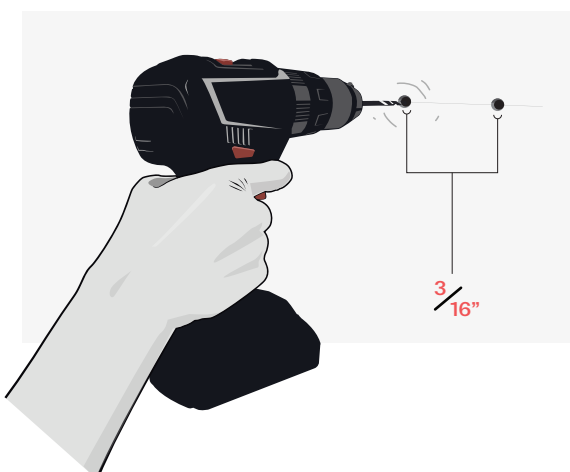
1. Use the level to mark a straight line on the wall where you want to hang your art



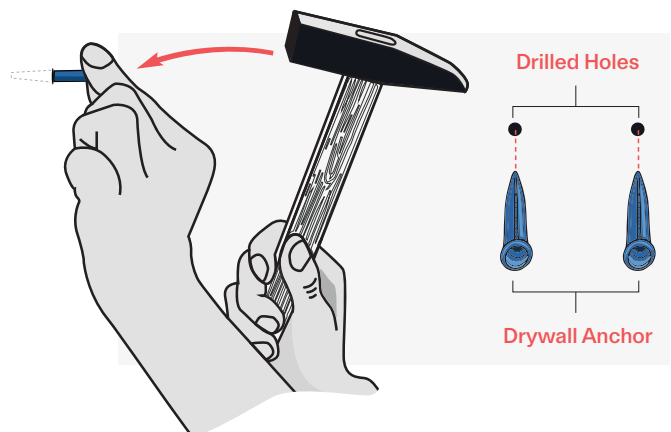
2. Hold the loose cleat with angled edge on the top against the marked line, and mark the two hole locations on the wall with a pencil.



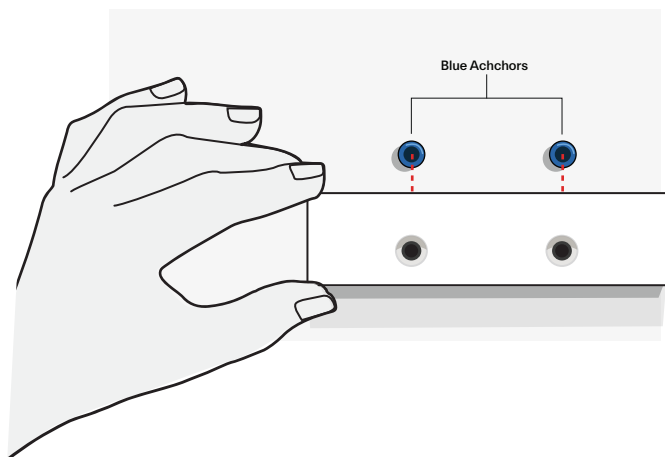
3. Drill small holes where the anchors will go, then hammer the wall anchors flush with the wall



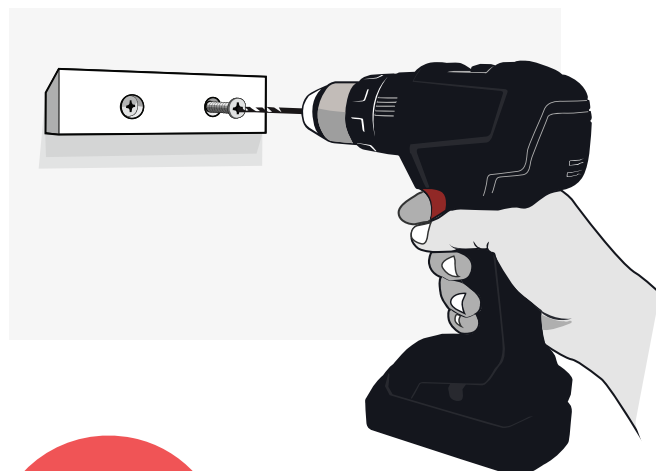
4. Drill into the marked holes, then hammer the anchors into the wall until flush



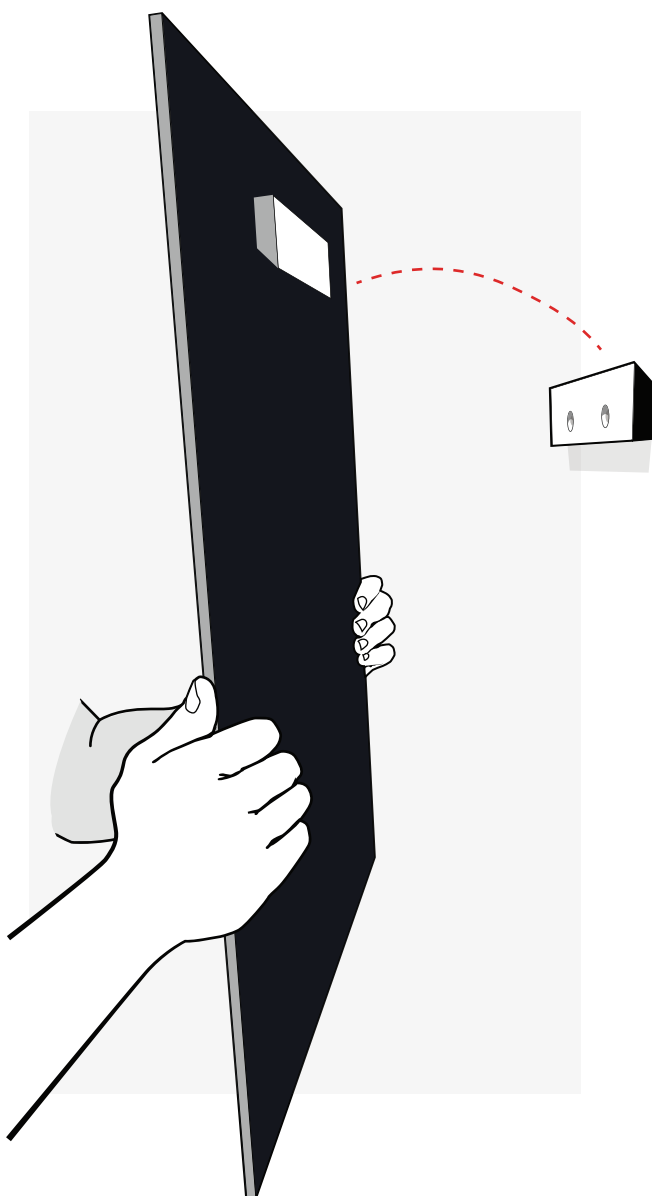
- 5.** Tap the supplied drywall anchors firmly into drilled holes



- 6.** Align the loose cleat with the wall anchors and drill screws through the cleat into the wall anchors



- 7.** Peel off the protective film from your art, then slide it down onto the mounted cleat to interlock them



**Enjoy
your Art**

